

IDYLL

Country Lodges

Tel: 01953 860061 • 07905 617946 • Email: info@idylllodges.co.uk • Web: www.idylllodges.co.uk

THE IDYLL LODGES EXPERIENCE

Pre-arrival

Guests will be invited to tell us a few details about themselves and what they would like to gain from the weekend, anything they wish to do on site and anything we can do/book/reserve prior to arrival. For example we could set up a casserole pot ready for arrival, or provide a BBQ or pizza making hamper.

The Arrival

Turn in to the private drive and through the gardens to automatic gates, that recognise your car, and open to reveal a tree lined avenue. Continue on to the private car park. Walk over the footbridge to be greeted in the barn by the pond, for introduction and show around. If you bought any cycles or other outdoor gear it can be secured safely in your own equipment store.

The Site



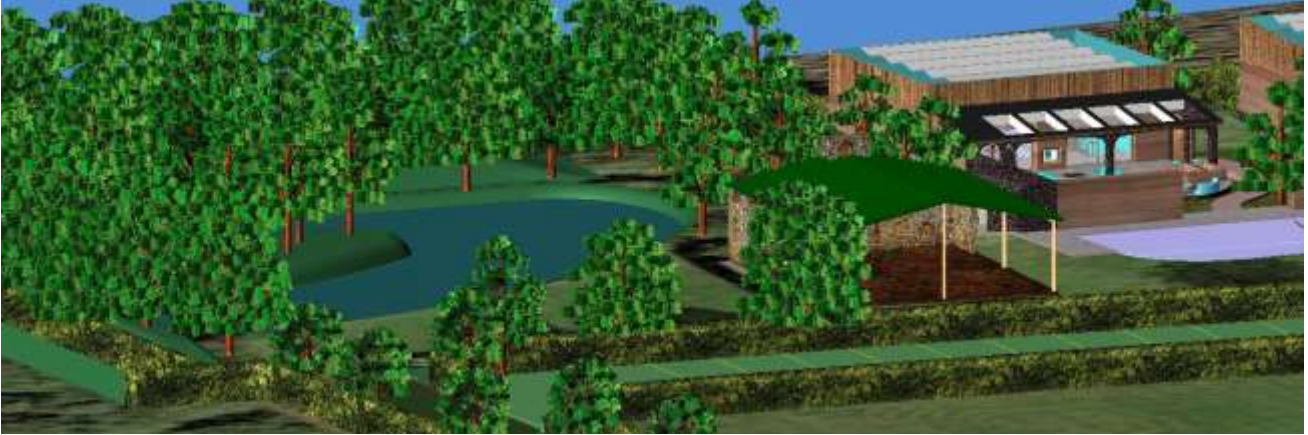
Naturally building a better place

IDYLL

Country Lodges

Tel: 01953 860061 ♦ 07905 617946 ♦ Email: info@idylllodges.co.uk ♦ Web: www.idylllodges.co.uk

Pond and Barn



The Lodges and Pool



The Swimming Pond

Approach your lodge by path, perhaps take a moment to sit in a seat recess set into the wall, overlooking the pond and planting. Alternatively circle around, through the pond landscaping to take the bridge over the pond. It's quite possible to reach your entrance without passing another entrance. In front of you, a robust pair of wooden gates to your Oak, Stone, Iron or Copper lodge.

Approach over the Pond



The Entrance

Open the double gates that glide back into the walls to reveal the garden, patio and sun terrace. Directly in front of you is the fire pit with circular rill and ground level seating. The fire pit is able to heat the rill water to the level of hot foot spa, and would be seen to be steaming on a cool night air. A path curls round to the right that leads to the solid wooden entrance door. Your garden is entirely closed, the thick curvy walls are 2m high for complete privacy, and designed to limit noise transmission and echo. A quiet bench may be set into one arc, the others use planting to soften the hard surfaces.

Looking through the sliding wall gate



The Sun Lounge and Patio



The Sun Lounge and Spa

Looking onward to the sun lounge area you see the wide arches and glass panels right across the front. At the left end you may notice the smaller arch is the glass fronted sauna that overlooks the garden. Behind that is a shower and steam room. To the right is the monolithic twin double ended spa tub. This is unlike a hot tub that keeps the same water; dosed with chemicals to the extent they must be checked twice a day to be safe. These tubs use clean fresh water, heated carbon free, with heat and water recovery. So, great for sensitive skin, or treat yourself to your favourite essential oils and bubbles. The tub can be rolled forward to be under the stars and by the fire. Flexible loungers can simply convert the tubs into daybeds. In the middle there is sunken seating in front of the woodburner masonry stove with overhead pizza oven.

Naturally building a better place

IDYLL

Country Lodges

Tel: 01953 860061 • 07905 617946 • Email: info@idylllodges.co.uk • Web: www.idylllodges.co.uk

Lodge and Garden



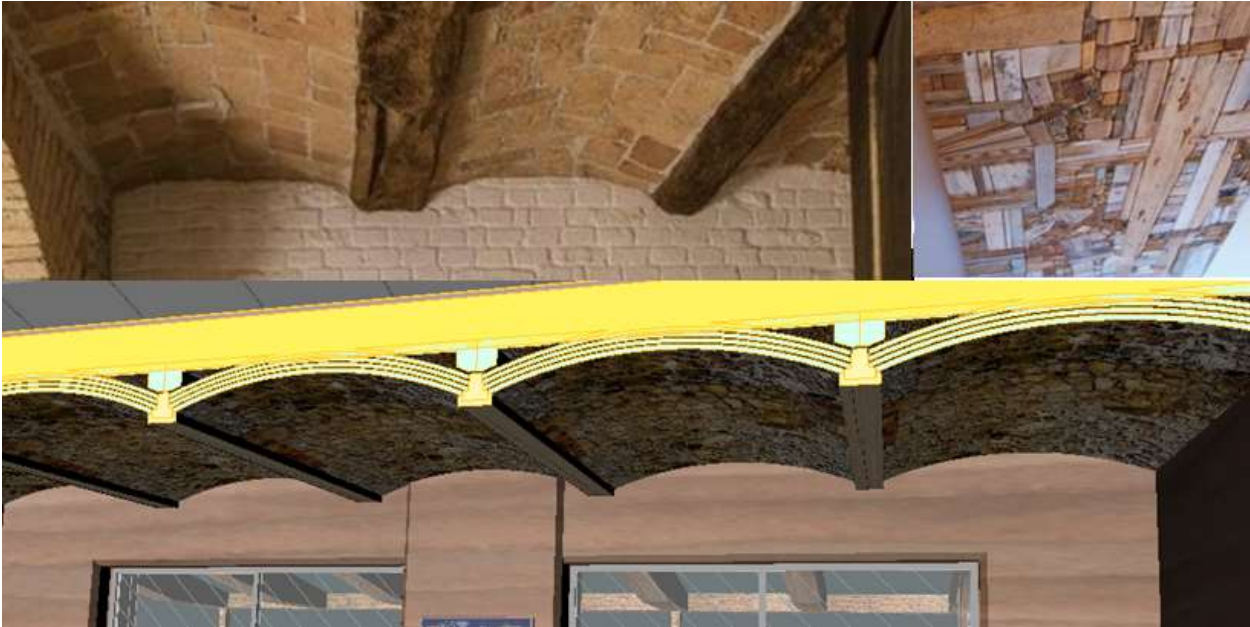
Lodge Accommodation



Entering Your Lodge

Through the reassuringly heavy wooden door, you may first want to bring the outside in. All the glass to the front and side can slide completely open. From here looking out is a view of your own courtyard garden and through your wide gate across the pool to the landscaping beyond. Or you may choose to close your gate and enjoy total privacy. Back inside, the glass wall to the interior can also slide right away to be hidden in the walls. The central woodburner masonry heater can be lit and enjoyed from the inside lounge and the sun terrace. At the far end of the terrace is the steam room, shower and sauna. Hidden behind the shower is a drying closet, for any wet coats and boots bought in, it'll be so much nicer putting them on in the morning.

The lounge, kitchen, dining area has yet to be configured properly, but here you will find a welcome basket. The walls are clay coloured rammed earth, the earthen floor feels unique under foot, and the multi-vaulted ceiling is a piece of art in itself that could hold your gaze for hours, all enhanced with adjustable lighting solutions.



Moving on through, both bedrooms are on-suite with shower. The main bedroom also has a bath overlooking the fields. Here the door and panel can be folded back to make the bath part of the bedroom if desired. There are French doors to a small patio out back that looks across the fields. Both bedrooms have a hidden pull-out third bed.

Your Stay

The lodges are self-catering but we may be able to offer locally sourced bread and produce baskets, and for example a BBQ or pizza making hamper. In the barn we may invite guests for a barista coffee or set up some wine tasting, art appreciation or classes and other activities. In the garden we hope to feature for example garden sculptures from local artists. The lodges are designed to extend the season, so you can be in your courtyard garden, but in the cosy comfort of your sun terrace in all weathers. Throw open your gates and visit the barn to socialise, or close up and hunker down in your own privacy with your own private facilities. The 60m swimming pond can be used April to October, possibly longer for some, and will feature a distinct swimming zone, landscaped water garden and a few architecturally placed sails overhead. We will not have an onsite treatment room, but plan to establish local relationships to offer bookable onsite visits.

The Invisible Systems

Another document will describe the invisible systems that make this place function off-grid all year round. This includes the extensive solar PV array hidden from view within the roof, the heat pumps, energy/water/waste/pool systems hidden in the service tunnel, and the massive thermal energy store sitting underneath the gardens. Recycling, waste, laundry, even ash from the masonry fire can be invisibly sent to the service tunnel, and here too lie all the mechanical systems, allowing a minimal service intrusion to your stay.

Around The Site

We plan to build a large earth sheltered greenhouse for year-round organic fresh produce. There is also scope for further development of our light industrial area, consisting of 3 units plus space to build another two.

